

STEM School Label



High Level Event - Online

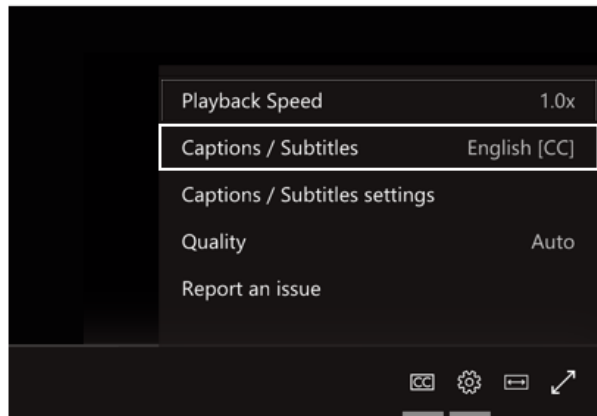
26 June 10:00 - 12:00 CEST




SUBTITLES AND QUESTIONS

To turn on live captions and subtitles, select **Captions/Subtitles On**  in your video controls.

To change the caption language, select **Settings**  > **Captions / Subtitles**, and choose the language you want.

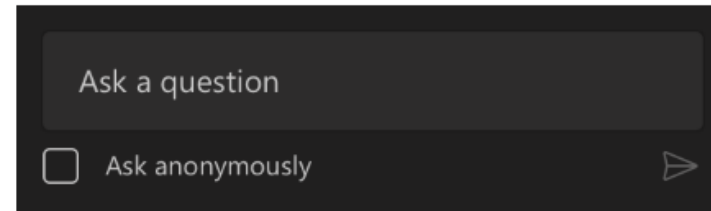


If you're an attendee and want to ask a question, just:

1. Select **Q&A**  on the right side of the screen.

Note: The Q&A panel only appears if the [organizer](#) has set it up.

2. Type your question in the compose box, and then select **Send**. If you want to ask your question anonymously, select **Ask anonymously**.

A screenshot of a Q&A panel. It features a dark background with a text input field containing the placeholder text 'Ask a question'. Below the input field, there is a checkbox labeled 'Ask anonymously' and a right-pointing arrow button.

IF YOU DID NOT DO IT YESTERDAY, SIGN IN THE PARTICIPANTS LIST

- Go to <https://padlet.com/eunacademy/STEMSchoolLabelSignatures>
- Add a marker including:
 - Your location or of your school (full address)
 - Your name and surname
 - Photo (if possible)

1



2

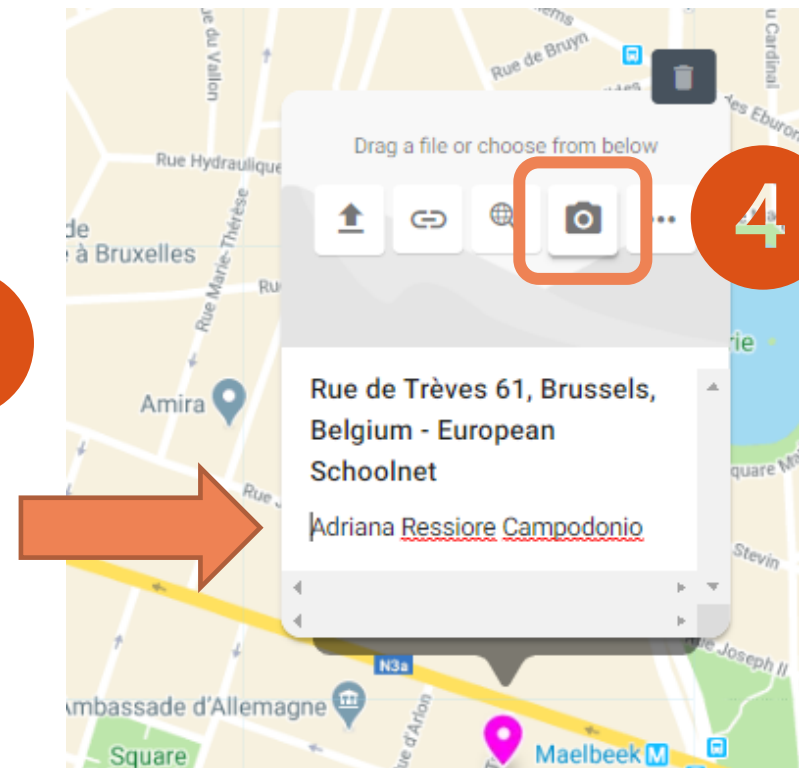
Pick a location

To pick a location, either search and select a place, or drag and drop the pin below to a point on the map.

Option 1

Search a place by name

3



4



Transforming education in Europe

www.europeanschoolnet.org



<http://scientix.eu>



SCIENTIX

The community for science
education in Europe



The work presented in this document is supported by the European Commission's H2020 programme – project Scientix 4 (Grant agreement N. 101000063), coordinated by European Schoolnet (EUN). The content of the document is the sole responsibility of the organizer and it does not represent the opinion of the European Commission (EC), and the EC is not responsible for any use that might be made of information contained.



COORDINATOR



PREMIUM PARTNERS



GENERAL PARTNERS



PARTNERS



NACIONALNĒ
ŠVIETIMO
AGENTŪRA



Co-funded by the
Erasmus+ Programme
of the European Union



STEM School Label is co-funded by the Erasmus+ Programme of the European Union (Grant Agreement N. 2017-1-BE02-KA201-034748). The content of this website is the sole responsibility of the organizer and it does not represent the opinion of the European Commission (EC), and the EC is not responsible for any use that might be made of information contained.



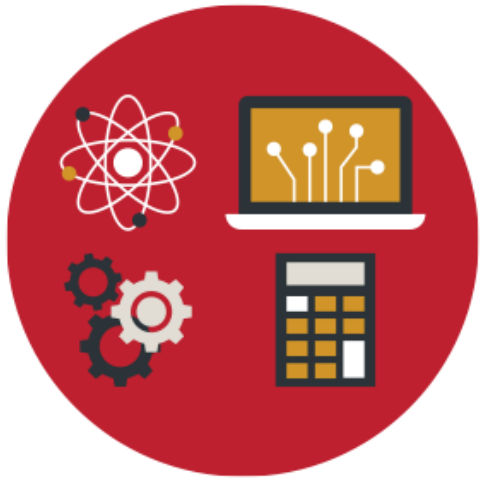
THE STEM SCHOOL LABEL

How can schools get a STEM School Label ?

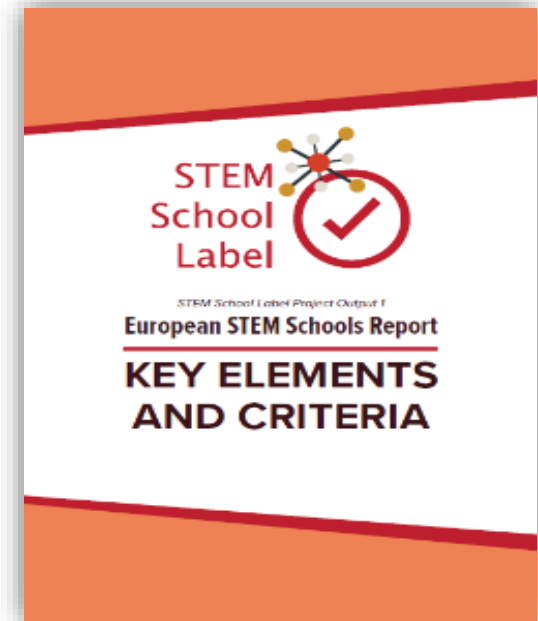


WHAT IS THE STEM SCHOOL LABEL ALL ABOUT?

Objective: “Guide **European schools** in increasing **young Europeans' interest and skills in STEM subjects** and to **provide** the schools with the necessary **tools to engage their students, teachers and other actors** in related activities by developing an **appropriate STEM strategy**.”



- Schools **evaluate** themselves via an online **Self-Assessment Tool**
- According to 21 **Criteria** defining a STEM School
- The tool identifies required **areas of development** and provide **Action Plan** as well as **resources**



Jimenez Iglesias, M., Faury, M., Iuliani, E., Billon, N. and Gras-Velazquez, A. (2018) “**European STEM Schools Report: Key Elements and Criteria – Executive Report**”, retrieved from http://files.eun.org/STEMSchoolLabel/STEM-School-elements_and_criteria_executive_report.pdf, European Schoolnet, Brussels, Belgium.

STEM SCHOOL KEY ELEMENTS AND CRITERIA

STEM School = School with a clear STEM strategy

- Personalisation of learning
- Project and problem-based learning (PBL)
- Inquiry Based Science Education (IBSE)

Instruction

- Highly qualified professionals
- Existence of supporting (pedagogical) staff
- Professional development

Professionalization of staff

- With industry professionals
- With parents/guardians
- With other schools and/or educational platforms
- With universities and/or research centers
- With local communities

Connections

School infrastructure

- Access to technology and equipment
- High quality instruction classroom materials

Curriculum implementation

- Emphasis on STEM topics and competences
- Interdisciplinary instruction
- Contextualisation of STEM teaching

Assessment

- Continuous assessment
- Personalised assessment

School leadership and culture

- School leadership
- High level of cooperation among staff
- Inclusive culture



STEM School elements and criteria with additional information:

<https://tinyurl.com/STEM-label-criteria>

STEP-BY-STEP GUIDE FOR THE SELF-ASSESSMENT OF THE SCHOOL

1) Registration of the school on:

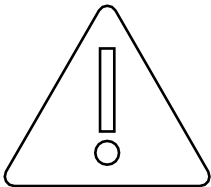
<https://stemschoollabel.eu>

After logging in for the first time, click on 'User profile' to edit your profile and add your school

2) Submission of School Practice Evidence + Case Studies

3) Submission of Self-Assessment Form

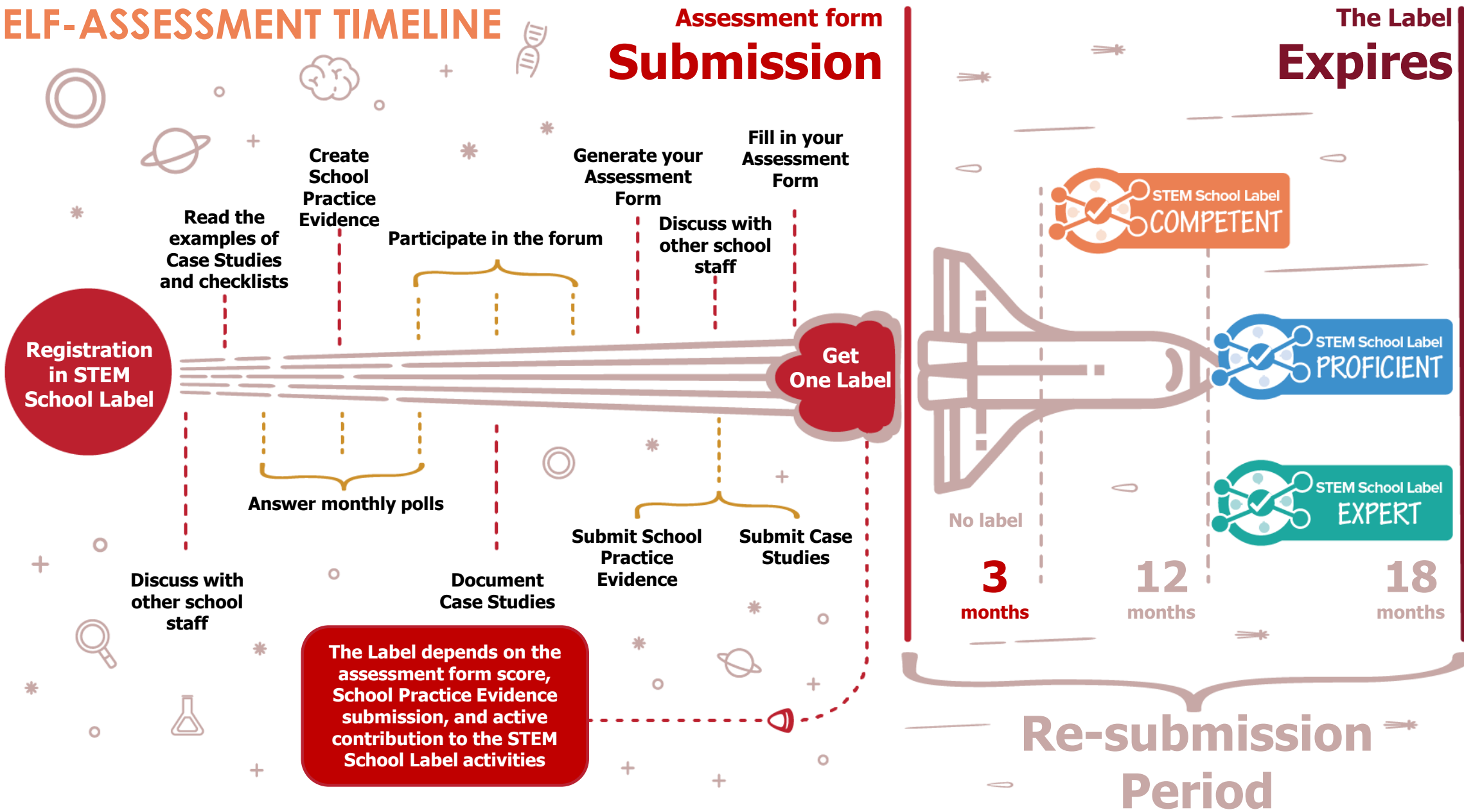
4) Label + Personalised Feedback generated with resources to help the school improve and go to the next label



Remember:

1. The school representative will not be able to edit the Self-Assessment Form anymore after submitting
2. School Practice Evidence (SPE) and other participation in the portal (via Case Studies, monthly poll, posts in the forum) need to be submitted at least 7 working days before submitting the Self-Assessment Form.

SELF-ASSESSMENT TIMELINE

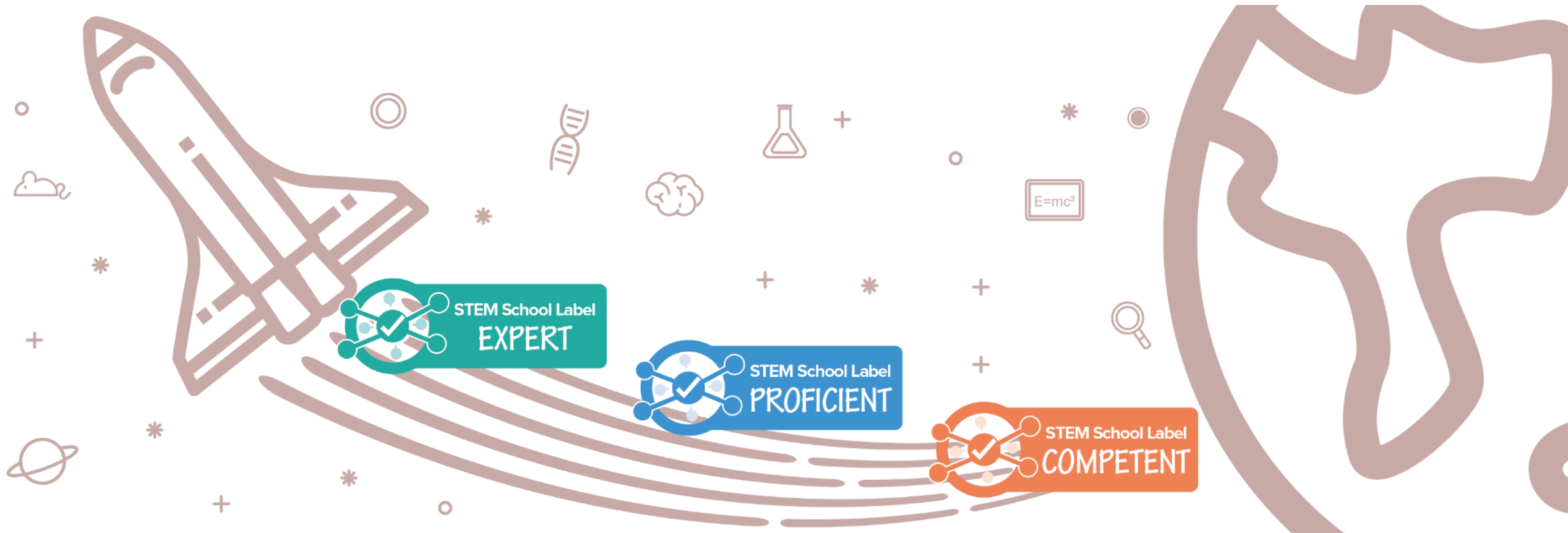


SCHOOL PRACTICE EVIDENCE (SPE)

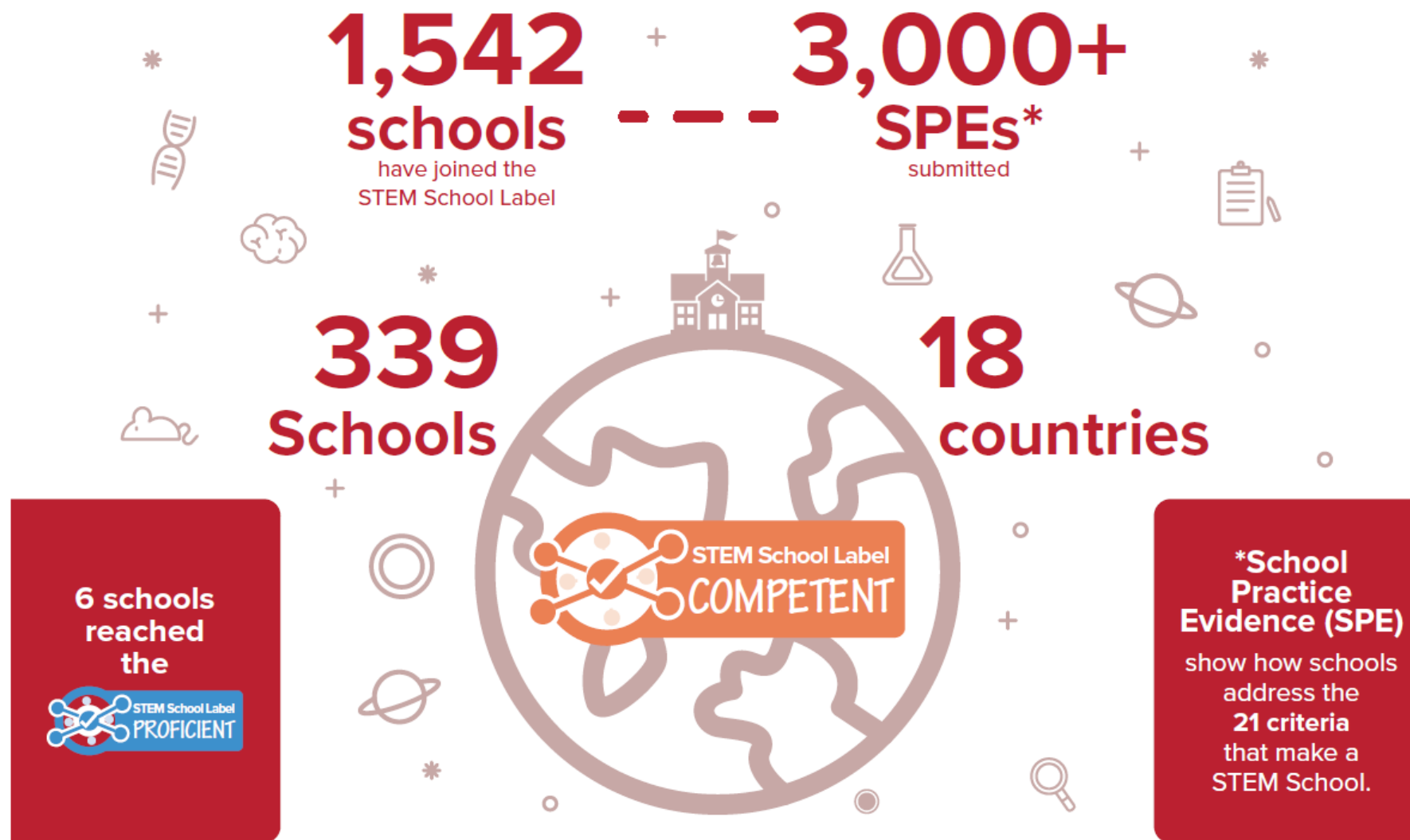


- **Definition:** SPE provide evidence and proof to answers from the school in the self-assessment form and to its activities related to one or more STEM School criteria.
- **SPE should include a very good description in English containing ALL the key information, plus a file or weblink** providing e.g. press clippings, videos, events agenda, photos, news on websites, certificates of attendance etc. **which can be in any language**

GET A LABEL FOR YOUR SCHOOL



JOIN THE COMMUNITY AND PARTICIPATE TO STEM SCHOOL LABEL ACTIVITIES



COLLABORATION TOOLS

ENGLISH ▼



MEMBERS COMMUNITY

LOGOUT



Home

Prepare

Collaborate

Get Label

School Practice Evidence

Case Studies

Community > Collaborate



Collaborate

Participating in and contruting to this platform allows you to exchange views and knowledge with your peers on developing a solid STEM strategy at the school level. In this area you can share your expertise with other STEM School contributors, express your opinions, ask questions or benefit from other people's experience via the different tools displayed below.

Polls Display

(+0.2 pts) How long did it take you to prepare your Self-Assessment Form submissions?

- ☐ Less than 1 day
- ☐ A couple of days
- ☐ More than 1 week
- ☐ We have not submitted anything yet

Vote



AMBASSADOR STEM SCHOOLS

20
Schools

Portugal, Lithuania,
France, Serbia, Spain,
Greece and Turkey

have been invited to become



AMBASSADOR
STEM Schools

with the help of the
STEM School Label
will work to upgrade their Label



ASSOCIATE PARTNERS

The STEM School Label is proud to be supported by the following associate partners: **GSMA** (United Kingdom), **DOREA Educational Institute** (Cyprus), and **Voka, Chamber of Commerce and Industry – Antwerp-Waasland** (Belgium). As associate partners, they will integrate the STEM School Label framework within some of their activities.



**Chamber of
Commerce and Industry**
Antwerp-
Waasland